

# NTQ123



<b>Total Power</b>	<b>70 - 120 Watts</b>
<b>Input Voltages</b>	<b>85 - 264VAC</b>
<b># of Outputs</b>	<b>Quad</b>

## SPECIAL FEATURES

- Active power factor correction
- EN61000-3-2 compliance
- Remote sense on outputs one and two
- Power fail and remote inhibit
- Single wire current sharing on outputs one and two
- Adjustable main outputs
- Built-in Class B EMI filter
- Overvoltage protection
- Overload protection
- Thermal overload protection

## ENVIRONMENTAL

Operating temperature: 0° to 50°C ambient; derate each output at 2.5% per degree from 50° to 70°C

Electromagnetic susceptibility: Designed to meet EN61000-4, -2, -3, -4, -5, -6, -8, -11 Level 3

Humidity: Operating; non-condensing 5% to 95%

Vibration: Three orthogonal axes, sweep at 1 oct/min, 5 min. dwell at four major resonances 0.7 G peak 5 Hz to 500 Hz, operational

Storage temperature: -40° to 85°C

Temperature coefficient: ± .04% per °C

MTBF demonstrated: >1 million hours at full load and 25°C ambient conditions

## ELECTRICAL SPECIFICATIONS

### Input

Input range .....	85-264 VAC
Frequency .....	47-63 Hz
Inrush current .....	38 A max., cold start @ 25°C
Efficiency .....	65% typical at full load
EMI filter .....	FCC Class B conducted and radiated, CISPR 22 Class B conducted and radiated, EN55022 Class B conducted and radiated, VDE 0878 PT3 Class B conducted and radiated.
Power factor .....	0.99 typical
Safety ground	
Leakage current .....	<0.75 mA @ 50/60 Hz, 264 VAC input

### Output

Maximum power .....	70 W convection, 120 W with 30 CFM forced air
Adjustment range .....	±5% minimum on outputs one and two
Hold-up time .....	20 ms @ 120 W load, 120 VAC input
Overload protection .....	Short circuit protection on all outputs. Case overload protected @ 110-145% above peak rating
Overvoltage protection .....	3.3 V and 5 V output: 20% to 35% above nominal output

### Logic Control

Power failure .....	TTL logic signal goes high 100-500 msec after 5 V output; it goes low at least 4 msec before loss of regulation
Remote Inhibit .....	Requires an external TTL Signal to inhibit outputs
Remote sense .....	3.3V and 5V outputs: compensates for 0.5 V lead drop minimum, will operate without remote sense connected. Reverse connection protection.

## SAFETY

<b>VDE</b>	0805/EN60950 (IEC950)	21310-3336-0004
<b>UL</b>	UL1950	E186249
<b>CSA</b>	CSA 22.2-234 Level 3	LR109492C
<b>NEMKO</b>	EN 60950/EMKO-TUE (74-sec) 203	P98100870
<b>BABT</b>	EN60950/EN41003	608497
<b>CB</b>	Certificate and report	5009
<b>CE</b>	Mark (LVD)	

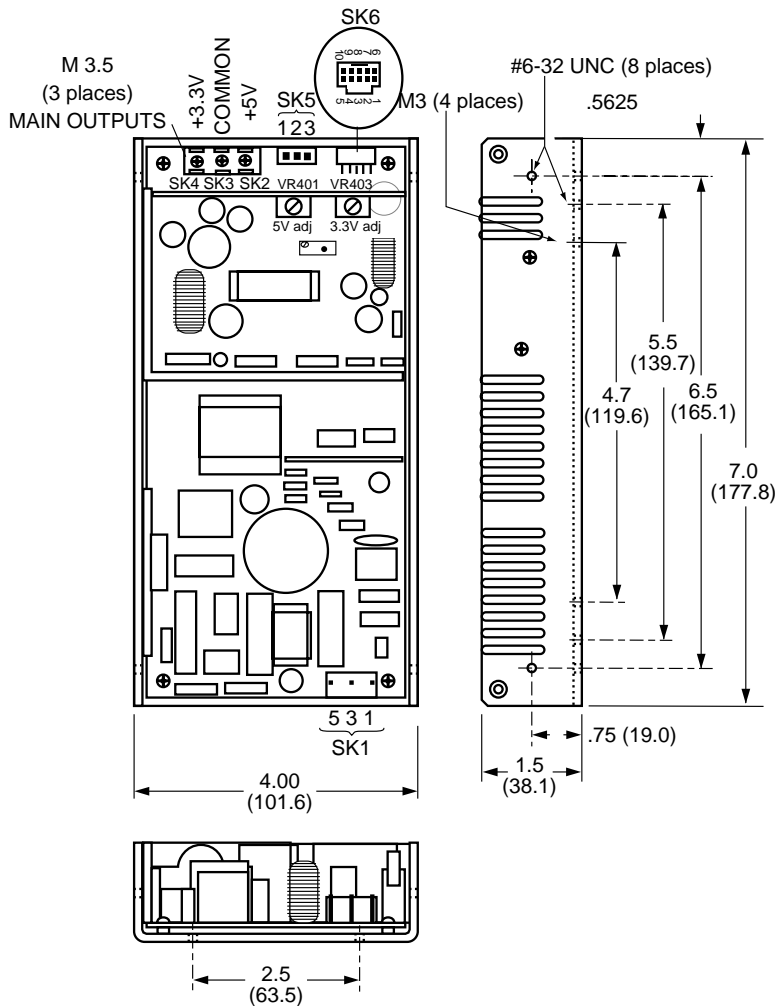


## ORDERING INFORMATION

Model Number	Output Voltage	Minimum Load	Maximum Load with Convection Cooling	Maximum Load with 30 CFM Forced Air	Peak Load <sup>1</sup>	Regulation <sup>2</sup>	Ripple P/P (PARD) <sup>3</sup>
NTQ123	+3.3 V	0 A	14 A	25 A	28 A	±2%	50 mV
	+5 V	1 A	12.5 A	24 A	28 A	±2%	50 mV
	+12 V	0 A	1 A	2 A	4 A	±3%	120 mV
	-12 V	0 A	0.5 A	1 A	1.5 A	±3%	120 mV

1. Peak current lasting <30 seconds with a maximum 10% duty cycle.
2. At 25°C including initial tolerance, line voltage, load currents and output voltages adjusted to factory settings.
3. Peak-to-peak with 20 MHz bandwidth and 10 µF in parallel with a 0.1 µF capacitor at rated line voltage and load ranges.
4. Minimum loads are required for correct operation, unit will self protect if not connected. In parallel minimum loads are 2.5 A on the 5 V output and 1 A on the 3.3 V output.

## DRAWINGS



## PIN ASSIGNMENTS

### Connector

Connector	PIN	Assignment
SK1	PIN 1	Ground
	PIN 3	Neutral
	PIN 5	Live
SK5	PIN 1	+12 V
	PIN 2	Common
	PIN 3	-12 V
SK6	PIN 1	3.3 V SWP
	PIN 2	-3.3 V Sense
	PIN 3	+3.3 V + Sense
	PIN 4	5 V SWP
	PIN 5	COMMON
	PIN 6	+5 V Sense
	PIN 7	-5 V Sense
	PIN 8	+ Inhibit
	PIN 9	- Inhibit
	PIN 10	Power Fail

NTQ123

## MATING CONNECTORS

(SK1) AC Input: Molex: 09-50-8051 (USA)  
Molex: 24-03-4050 (UK)  
PINS: 08-58-0189

SK2,3,4: Molex BB-124-08

(SK5) ±12V Molex: 09-50-8031 (USA)  
Molex: 24-03-4030 (UK)  
PINS: 08-58-0189

(SK6) Control Signals: Molex: 90142-0010  
PINS: 90119-2110  
or  
Amp: 87977-3  
PINS: 87309-8

Astec Connector Kit #70-841-012

## NOTES

1. Specifications subject to change without notice.
2. All dimensions in inches (mm), tolerance ±.02".
3. Remote inhibit requires an external 5 V @ 10 mA to activate
4. Mounting maximum insertion depth is 0.15".
5. Warranty: 1 year
6. Weight: 1.38 lb. / .63 kg

REV 10.05.99

